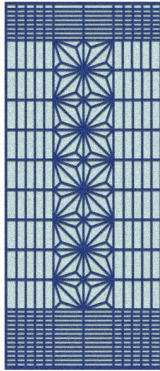


ORIGAMI
Zintra Patterns



Texture: 3
Lustre: 1
Transparency: 1

<p>DESCRIPTION / FEATURES</p>	<p>The Zintra popular acoustic solution has undergone a style update to bring you Zintra Patterns. Experience our range of classic to contemporary screen designs cut out of Zintra. The perforated panel can be installed as is or matching / contrasting Zintra backer added to create a unique look for walls or ceilings. In just the one product you will find style, texture, contrast, depth and the added benefit of sound absorption to create a harmonious environment.</p> <ul style="list-style-type: none"> * Increased noise absorption * Easy installation * Broad range of neutral and bright colour <p>Find out more about the Benefits of Zintra and its NRC rating on the DOWNLOAD tab.</p>
--------------------------------------	--

HOW TO SPECIFY	<ol style="list-style-type: none"> 1. Design 2. Size 3. Design Colour 4. Backing Colour
COMPOSITION	Zintra Acoustic Panel - 100% Polyester
FINISHES AVAILABLE	Zintra Panel - Matt. Available in all 20 Zintra colours. _____
SHEET SIZE	<p>610mm x 610mm</p> <p>1220mm x 610mm</p> <p>2745mm x 1220mm</p> <p>Pattern only - 12mm</p> <p>Pattern later on backer - 24mm</p>
INDOOR/OUTDOOR	Indoor only
WET AREAS	No
SUGGESTED INSTALLATION	<p>Check out the DOWNLOAD tab for a complete Handling and Installation guide.</p> <p>Be sure to support the panel during installation to avoid bowing or creasing.</p> <p>Adhere to substrate using contact adhesive, Liquid Nails or Z clips.</p> <p>Panel can also be mechanically fixed using details similar to glass fittings.</p>

LEAD TIME	4-6 weeks.
CUSTOMISABLE	Design - Yes Colour - Yes Contact Crown Surface Solutions for details
THERMOFORMABLE	No
FIRE	Zintra
ADDITIONAL COMMENTS	Not suitable as a free standing product. NRC - 0.45 - 0.95
FABRICATION	Stanley knife if required
REFINISHABLE	No
CARE INSTRUCTIONS	Zintra
ENVIRONMENTAL INFORMATION	Easily recycled through standard recycling channels
FIRE RATING	In accordance with ASTM-E84, Zintra™ Acoustic 1/2" Panels achieve a Class A Flame Spread - passes CAN ULC S102-10.

SUPPLIED AS	Sheet ready to install
CARE INSTRUCTIONS	<p>Remove spills immediately using damp, clean cloth.</p> <p>Dab Zintra with a clean, soft white cloth dampened with a mild solution of liquid detergent and warm water. Repeat using only clean water, then pat dry with a lint free cloth.</p> <p>Avoid using wax polishes, solvents or concentrated abrasives.</p> <p>For more difficult stains, dampen a soft white cloth with a solution of household bleach (10% bleach / 90% water). Dab gently.</p>

Repeat using only a clean, water dampened cloth to remove bleach concentration, then pat dry with a lint free cloth.

Always test in an inconspicuous area first. If care instructions don't deliver the expected results, cease cleaning method immediately and contact Crown Surface Solutions for assistance.